



DRUG AWARENESS

Inhaling illegal substances

HUFFING / VAPING

- Inhalants include chemicals found in such household products as aerosol sprays, cleaning fluids, glue, paint, paint thinner, nail polish remover, amyl nitrite¹ and lighter fuel. They are sniffed or “huffed” (act of inhaling vapors).
- People who use inhalants can lose their sense of smell, suffer nausea and nosebleeds and may develop liver, lung and kidney problems.
- Continued use can lead to reduced muscle mass, tone and strength. Inhalants can make people unable to walk, talk and think normally. Much of the damage is caused to the brain tissue when the toxic fumes are sniffed straight into the sinus.

Use of Marijuana

- You can smoke it, vape it, drink it, or eat it
- Marijuana is a mind altering compounds that affect your brain and body
- Not everyone's experience with Marijuana is pleasant
- Using marijuana may raise your chances of clinical depression or worsen the symptoms of any mental disorders you already have.
- Marijuana can cloud your judgement
- Hurt your motor skills and make driving more dangerous
- Lower your inhibition, so you may have risky sex or take chances.

Possession / use of alcohol

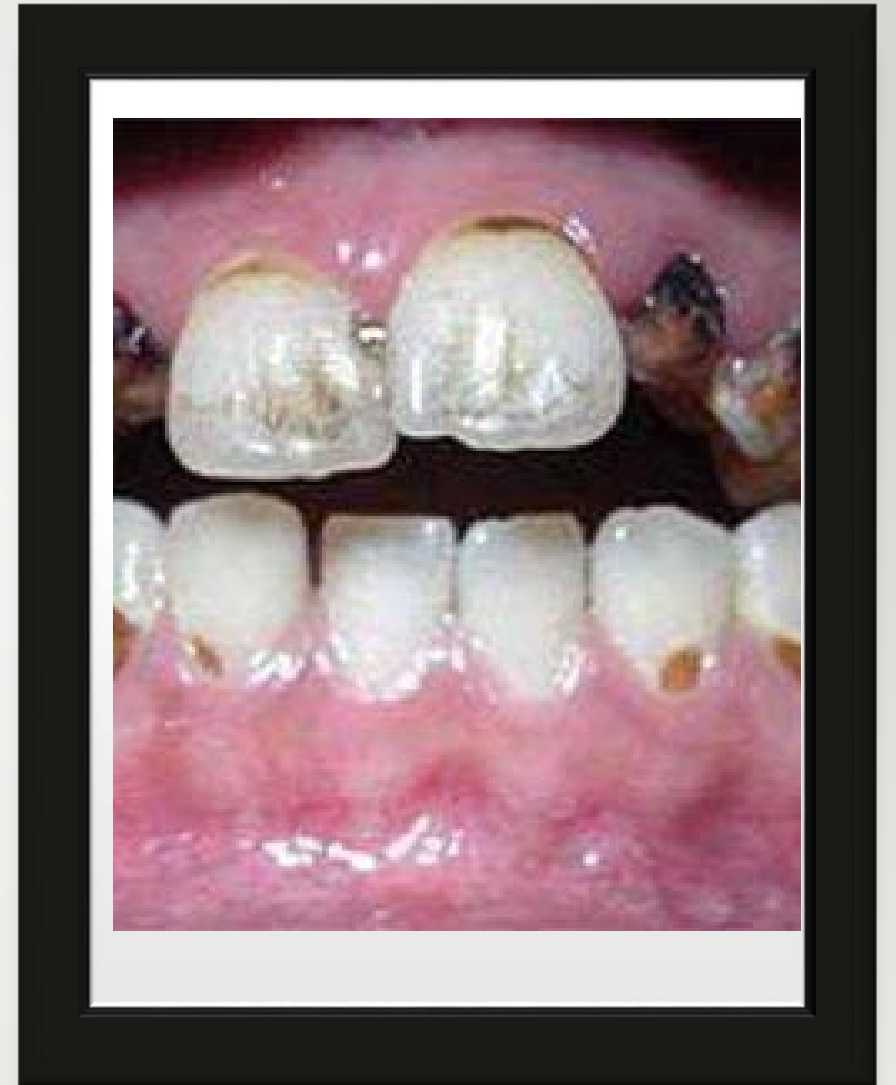
- Underage or possession or drinking is illegal under Arizona Revised Statute. (ARS 4-244)
- Asking for another to purchase alcohol for you is illegal. (ARS 4-241)
- Having alcohol in your system in the State of Arizona is illegal. (ARS 4-244.9)
- Alcohol interferes with the brain's communication pathways and can affect the way you make judgements.
- Consuming alcohol can lead to the following Confusion, vomiting, seizures, slow breathing, lower body temperature, and passing out.

Possession / Use of Methamphetamine

- Methamphetamine is a powerful, highly addictive stimulant that affects
- Crystal Methamphetamine is a form of the drug that looks like glass fragments or shiny, bluish-white
- Can be smoked, swallowed, snorted and injected
- Increased wakefulness/ physical activity
- Decrease appetite, faster breathing
- Rapid / irregular heartbeat & increased blood pressure
- Addiction, dental problems, violent behavior

Possession / Use of
Methamphetamine

Affects of Methamphetamine
addiction (Meth mouth)



Spice (Black Mamba, Bliss, Bombay blue, fake weed, Genie, K2, Yucatan Fire and Zohai)

- Spice is a mix of herbs and laboratory-made chemicals with mind altering effects.
- Due to the chemicals used in spice have a high potential for abuse and no medical benefit, the Drug Enforcement Administration has made many of the active chemical found in spice illegal
- Bad reactions to spice:
- Fast heart rate, throwing up, extreme anxiety/ nervousness
- Hallucinations, feeling confused, violent behaviors and suicidal thoughts.

Incorrigible/ Delinquency

- An "incorrigible" youth is one who is truant, runaway, refuses to obey a parent or guardian, violates curfew or smokes cigarettes. ARS § 8-201
- A "delinquent" youth is one who, if he/she was an adult, could be charged with any crime listed in Title 13 of the Arizona Revised Statutes. ARS § 8-201.
- Many Juvenile records are no longer confidential
- Juvenile adjudication can trigger enhancements in sentencing for later convictions
- Harsher adjudication with federal guidelines



What happens to your body during drug withdraws?

- May feel shaky, depressed, sick to your stomach, sweat or have headaches.
- In severe cases, result in being confused, seizures or running a fever

If you know someone, who you care for or love contact the police or contact an adult you trust to seek help.